

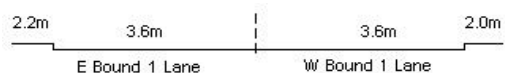
YEAR 2020

COVERAGE (B) STATION 2204

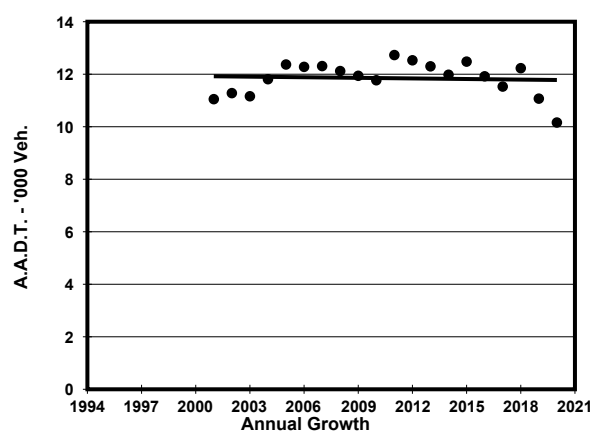
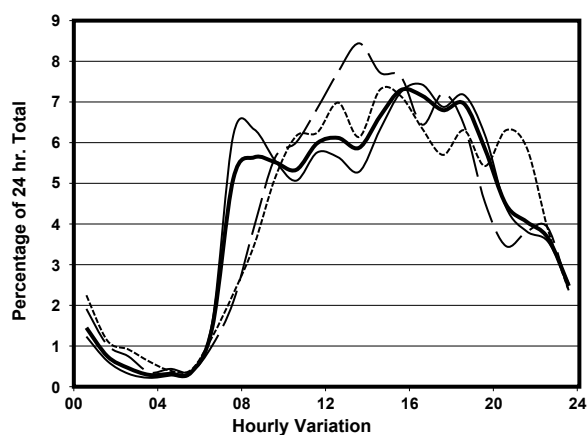
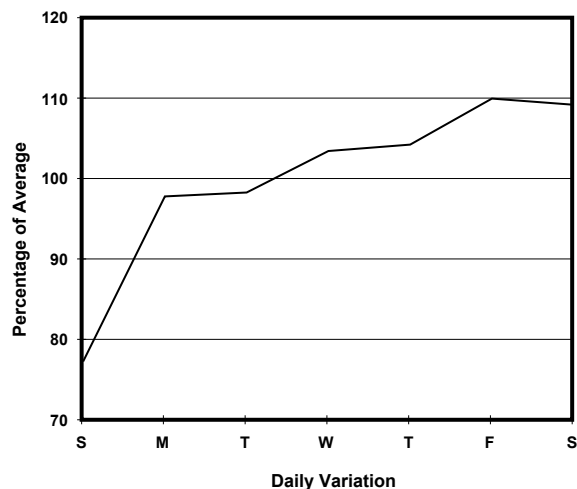
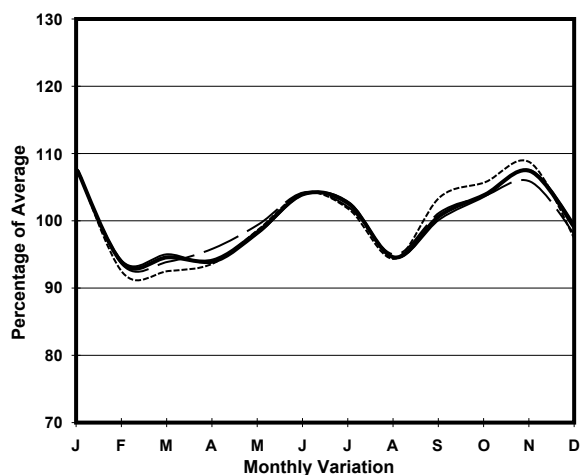
ROAD NETWORK MAJOR

ROAD TYPE DISTRICT DISTRIBUTOR

LINK YEE KING RD & LAI TAK TSUEN RD (from CLOUD VIEW RD to TAI HANG RD)



## 1. TRAFFIC FLOW VARIATION AND GROWTH



— All day    — Mon.- Fri.    ..... Sat.    - - - - - Sun.

## 2. TRAFFIC CHARACTERISTICS (BY DIRECTION)

Parameter	All - Day	Mon. - Fri.	Sat.	Sun.
<b>EAST BOUND</b>				
A.A.D.T.	6160	6370	6800	5010
R 12 / 24 - %	72.6	73	74.4	67.7
R 16 / 24 - %	92	92.4	91.3	90.2
AM Peak Hour	0800-0900	0700-0800	0900-1000	0900-1000
One-way flow at AM peak hour	330	390	390	290
T - % (AM)	-	18.1	-	-
PM Peak Hour	1600-1700	1600-1700	1700-1800	1600-1700
One-way flow at PM peak hour	440	480	470	310
T - % (PM)	-	8	-	-
Prop.of commercial vehicles - 16 hr.	-	8.4	-	-
<b>WEST BOUND</b>				
A.A.D.T.	4000	4200	4420	2950
R 12 / 24 - %	77.2	77.6	78.7	71.9
R 16 / 24 - %	93.2	93.5	92.6	91.5
AM Peak Hour	0800-0900	0800-0900	0900-1000	0900-1000
One-way flow at AM peak hour	240	280	240	120
T - % (AM)	-	13.8	-	-
PM Peak Hour	1800-1900	1800-1900	1700-1800	1600-1700
One-way flow at PM peak hour	290	310	340	200
T - % (PM)	-	3.1	-	-
Prop.of commercial vehicles - 16 hr.	-	6.4	-	-

## 3. OTHER INFORMATION AND COMMENT

**Coverage (B) Station 2204**  
**Year 2020**

**4. Vehicle classification and occupancy - Monday to Friday**

Time		Class of vehicle									
		Motor Cycle	Private Car	Taxi	Private LB	PLB	Goods veh.		Non Fr. Bus	Fr. Bus	
							Light	M & H		SD	DD
0700-0800	Pro	0.0	43.5	16.6	8.3	7.3	8.3	1.0	6.2	0.8	8.0
	Ocp	0.0	1.3	1.8	3.0	7.7	1.5	1.0	5.0	4.7	16.4
0800-0900	Pro	0.7	55.3	15.3	6.5	5.8	4.4	0.0	5.8	1.1	5.1
	Ocp	1.0	1.4	1.9	5.1	13.5	1.8	0.0	4.3	8.0	11.5
0900-1000	Pro	2.1	60.2	15.9	3.7	3.7	10.0	0.0	0.0	0.8	3.6
	Ocp	1.0	1.4	1.5	1.4	10.9	1.7	0.0	0.0	3.7	7.9
1000-1100	Pro	2.1	48.7	30.4	2.1	2.6	9.4	0.0	1.0	0.3	3.4
	Ocp	1.0	1.3	1.2	2.0	10.0	1.6	0.0	2.0	6.0	8.0
1100-1200	Pro	0.6	56.9	24.8	2.3	2.8	7.3	0.0	2.3	0.0	3.1
	Ocp	1.0	1.5	1.2	2.3	11.2	1.8	0.0	6.8	0.0	7.2
1200-1300	Pro	2.2	54.4	21.0	5.9	2.7	6.5	0.0	4.3	0.0	3.1
	Ocp	1.0	1.4	1.4	2.3	11.0	1.3	0.0	5.3	0.0	10.1
1300-1400	Pro	2.6	51.8	16.7	6.8	4.7	5.2	1.6	6.8	0.0	3.8
	Ocp	1.0	1.4	1.7	6.3	13.8	1.5	2.0	11.8	0.0	17.0
1400-1500	Pro	2.0	54.8	24.1	2.0	3.3	9.1	0.0	0.7	0.0	4.1
	Ocp	1.0	1.3	1.4	2.0	10.8	1.4	0.0	1.0	0.0	11.0
1500-1600	Pro	0.4	64.6	13.4	2.7	4.0	8.5	0.0	3.6	0.2	2.7
	Ocp	1.0	1.5	1.5	3.2	9.8	1.5	0.0	7.9	4.0	8.7
1600-1700 Peak hour	Pro	1.5	54.2	20.9	1.0	4.1	7.2	0.0	7.7	0.0	3.4
	Ocp	1.0	1.5	1.9	2.0	11.4	1.4	0.0	4.2	0.0	12.3
1700-1800	Pro	3.1	57.4	23.2	0.0	4.3	7.3	0.0	1.2	0.3	3.2
	Ocp	1.0	1.4	2.0	0.0	14.6	1.3	0.0	1.0	11.5	14.5
1800-1900	Pro	1.4	67.7	19.7	0.5	3.7	3.2	0.0	0.9	0.7	2.4
	Ocp	1.0	1.4	1.8	1.0	17.1	1.4	0.0	4.5	8.0	19.7
1900-2000	Pro	3.6	65.5	20.3	0.0	3.1	2.6	0.0	0.5	0.8	3.6
	Ocp	1.0	1.7	1.9	0.0	10.5	1.6	0.0	10.0	8.3	11.7
2000-2100	Pro	1.0	57.0	26.0	1.0	7.0	2.0	0.0	0.0	1.0	5.0
	Ocp	1.0	1.4	1.9	2.0	9.4	2.0	0.0	0.0	5.8	10.1
2100-2200	Pro	4.3	52.4	28.9	0.0	5.3	1.1	1.1	0.0	1.6	5.3
	Ocp	1.0	1.7	1.9	0.0	6.0	2.0	3.0	0.0	3.2	4.7
2200-2300	Pro	4.0	55.6	22.5	0.0	9.3	0.0	0.0	0.0	1.3	7.3
	Ocp	1.3	1.5	2.1	0.0	6.0	0.0	0.0	0.0	4.3	4.3
16 hours	Pro	1.9	57.1	20.8	2.7	4.2	6.2	0.2	2.7	0.5	3.8
	Ocp	1.0	1.4	1.7	3.4	11.1	1.5	2.0	6.3	6.0	11.1

**Legend: Pro.** Proportion of vehicles in % (Sum may not add up to 100% due to figure rounding)\*

**Ocp.** Average occupancy of vehicles including both driver and passengers\*

**M&H** Medium and Heavy

\* All traffic data are collected from combined bounds